

Approximation Techniques for Solving Cooling Capacity of Orifice Pulse Tube cryocooler

Pankaj Kumar¹, Ajay Kumar Gupta², R.K.Sahoo³
Mechanical Engineering, Nit, Rourkela, Rourkela, Orissa, INDIA

ABSTRACT: *An approximate numerical analysis is concerned with obtaining approximate solutions for predicting the cooling capacity while maintaining reasonable bounds on errors. Application of the result presented below for a particular numerical model without considering the loss mechanism due to shuttle loss, Regenerator and heat exchanger loss and losses due to conduction. The loss of accuracy with simulation due to a number of gross assumptions in simulation. Although an improved predicted cooling power as well as the pressure/volume relationships for various segments of the refrigerator achieved through a mathematical analysis and in order to improve the accuracy of the model a computer program is developed and runs successfully.*

Keywords: *Pulse, Tube, Cryocooler, Regenerator, Matlab.*

I. INTRODUCTION

Authors Cryogenics is the science of low temperature (Below 123K). By compressing the gas, the gas is cooled releasing heat and later allowed to expand producing ultra-low temperatures. This is one of the methods to produce low temperature marks the inception of one of the most promising cryogenics refrigerators. Cryocoolers are the devices which produce the required refrigeration power at low temperature. Low cost and high reliability are the crucial factor for the successful applications of cryocoolers. Due to the absence of the moving parts in the cold temperature region and the associated advantages of simplicity and enhanced reliability. The pulse tube system has become one of the most important topics in the field of cryogenics refrigeration. The Pulse Tube refrigerator first conceived in the mid 1960 by Gifford and Longworth appears to be a promising alternative among all the cryocoolers due to the simpler design and the absence of any moving part in the cold head of pulse tube cooler.

It has been seemed that in several research papers since from the past 50 years or so on they have suggested towards the development of an appropriate heat transfer correlation between the gas and the pulse tube wall. However explicit correlation that include oscillating and compressing or expanding flows are not available in the literature. This goal can yet to be achieved and verified by the iteration process combining the geometry optimizing process and the numerical simulation.

Since there are a several types of pulse tube cryocooler but the question continuation up to the present time and analysing which one will give better performance according to the requirement as per the simplest, low cost or by controlling the volume flow rate according to pressure oscillation discussion in this paper limited to the orifice pulse tube refrigerator.

II. PHYSICAL MODEL AND GOVERNING EQUATIONS

2.1 Physical Model

Fig-1 shows a schematic diagram of orifice pulse tube refrigerator. It consist of compressor, aftercooler, regenerator, pulse tube, cold and hot heat exchangers, orifice and reservoir

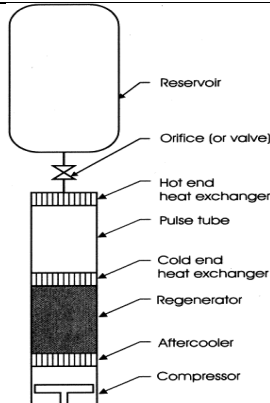


Fig.-1 Schematic Diagram of OPTR

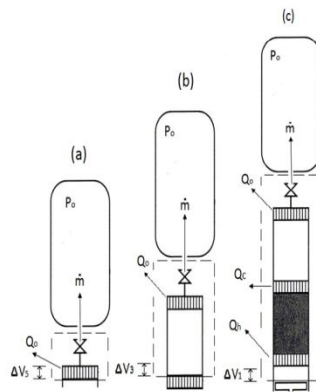


Fig.2. Control Volume patterns at various points

In order to simplify the problems some assumptions need to be made to a point where they can be analysed are listed below:

Pressure and volume oscillations are sinusoidal.

Helium, the working gas behaves as a perfect gas.

Mass transfer and bulk flow through the orifice, is a function of the pressure amplitude and the average density, $\rho_o : \dot{m} = k \rho_o \Delta P$ (k is the mass flow rate tuning constant)

Models used thermal equilibrium assumption for the porous zones (regenerator and the heat exchangers) in the OPTR

If a linear profile is assumed then T_{rg} is defined as $T_{rg} = \frac{T_h - T_c}{\ln(\frac{T_h}{T_c})}$

In the pulse tube flow is adiabatic and isentropic, such that $PV^\gamma = \text{constant}$.

In the cold and hot heat exchangers, the gas temperature is the same as that of the wall temperature of the heat exchanger, which is constant, i.e., heat transfer is perfect in the heat exchanger.

The temperature of the reservoir is isothermal.

2.2 Governing Equation

A mathematical representation of processes used for analysis of orifice pulse tube refrigerator are presented in this paper. According to the first law of thermodynamics

$$\dot{Q} = \Delta E + \dot{W} \text{----- (1)}$$

Since, the process is cyclic $\Delta E = 0$.

Therefore,
$$\dot{Q} = \dot{W} \text{----- (2)}$$

The rate at which work is done is simply
$$\dot{W} = W \times f \text{----- (3)}$$

Where f is the frequency of oscillation. If they are sinusoidal, the acoustic power can be written as

$$P_v \dot{V} = \frac{1}{2} P_1 \Delta V_1 \sin(\phi) \text{----- (4)}$$

Therefore the rate of work done due to expansion \dot{W} can be written as
$$\dot{W} = f \frac{1}{2} P_a \Delta V_a \sin(\phi) \text{----- (5)}$$

And \dot{Q} is equal to \dot{Q}_c i.e. cooling power
$$\dot{Q}_c = f \frac{1}{2} P_a \Delta V_a \sin(\phi) \text{----- (6)}$$

III. DEVELOPMENT OF THE EQUATIONS

The phase difference between pressure and mass flow rate is not same at every point due to the compressible flow therefore for the amplitude of volume oscillation are different at the two points. As shown in fig-2 pattern with a series of comprehensive control volume are represented, the patterns are at (1) aftercooler (2) regenerator (3) cold heat exchanger (4) Pulse tube (5) Hot heat exchanger. Applying a discrete volume method to any of the components in the system, the conservation of mass equation for the control volume. For arbitrary control volume in the system, the conservation can be represented as,

$$\frac{dm_n}{dt} = -m_{orifics} \dots\dots\dots (7)$$

(Negative sign shows that gas flow out of control volume)

From Fig. 2, Ma = M5, Mb = M5 + M4, and Mc = M5 + M4 + M3 + M2 + M1 = Moptr

The equations below represent the sum of original and varying values for pressure and volume

$$P_i = P_o + \Delta P_i \dots\dots\dots (8)$$

$$\Delta V_1 = V_{1,o} - \Delta V_1 \dots\dots\dots (9)$$

$$\Delta V_2 = V_2(Fixed) \dots\dots\dots (10)$$

$$\Delta V_3 = V_{3,o} + \Delta V_3 \dots\dots\dots (11)$$

$$\Delta V_4 = V_{4,o} + \Delta V_4 \dots\dots\dots (12)$$

$$\Delta V_5 = V_{5,o} - \Delta V_5 \dots\dots\dots (13)$$

As we know that PV=MRT or $\dot{m} = \frac{PV}{RT}$

Therefore with respect to time for control volume (a)

$$\frac{dM_5}{dt} = \frac{1}{RT_h} \frac{d}{dt} (P_5 V_5) \dots\dots\dots (14)$$

And also

$$\frac{dM_5}{dt} = -k\rho_o \Delta P \dots\dots\dots (15)$$

On equating both equation and substituting the value of P_5 and V_5 from equation 5 we get

$$\frac{dM_5}{dt} = \frac{1}{RT_h} \frac{d}{dt} ((P_o + \Delta P)(V_{5,o} - \Delta V_5))$$

$$= \frac{d\Delta P}{dt} \frac{V_{5,o}}{RT_h} - \frac{d\Delta V_5}{dt} \frac{P_o}{RT_h} \dots\dots\dots (16)$$

i.e. equal to

$$\frac{d\Delta P}{dt} \frac{V_{5,o}}{RT_h} - \frac{d\Delta V_5}{dt} \frac{P_o}{RT_h} = -k\rho_o \Delta P \dots\dots\dots (17)$$

Here, let $\Delta P = \Delta P_a e^{i\omega t}$ $\Delta V_5 = \Delta V_{5a} e^{i\omega t}$.

Substituting this into the equation above and taking the time derivative, we are left with an $e^{i\omega t}$ coefficient in all expressions, which is cancelled to give

$$i\omega \Delta P_a \frac{V_{5,o}}{RT_h} - i\omega \Delta V_{5a} \frac{P_o}{RT_h} = -k\rho_o \Delta P \dots\dots\dots (18)$$

$$\Delta V_{5a} = \left(\frac{V_{5,o}}{P_o} + \frac{k\rho_o RT_h}{i\omega P_o} \right) \Delta P_a \dots\dots\dots (19)$$

Similarly derived for control volume (b) & (c)

$$\Delta V_{3a} = a + \frac{V_{4,o}}{\gamma P_o} + \frac{V_{5,o}}{\rho_o RT_h} - \frac{2}{\rho_o} \left(\frac{V_{5,o}}{RT_h} + \frac{k\rho_o}{i\omega} \right) + \frac{k}{i\omega} \dots\dots\dots (20)$$

Where 'a' is

$$a = \left(\frac{V_{5,o}}{P_o} + \frac{k\rho_o RT_h}{i\omega P_o} \right) \dots\dots\dots (21)$$

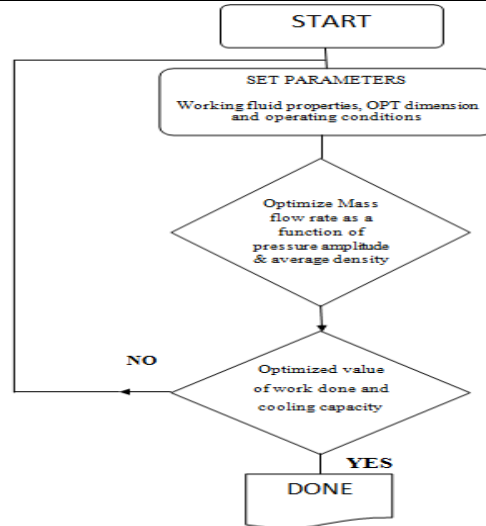
And

$$\Delta V_{1a} = \Delta P_a \left\{ \frac{RT_h}{P_o} \left(\frac{V_{1,o}}{RT_h} + \frac{V_2}{RT_r} + \frac{V_{3,o}}{RT_c} + \frac{bP_o}{RT_c} - b\rho_o + a\rho_o + \frac{V_{5,o}}{RT_h} + \frac{\rho_o V_{4,o}}{\gamma P_o} - \frac{aP_o}{RT_c} + \frac{k\rho_o}{i\omega} \right) \right\} \dots\dots\dots (22)$$

Where 'b' is

$$b = a + \frac{V_{4,o}}{\gamma P_o} + \frac{V_{5,o}}{\rho_o RT_h} - \frac{2}{\rho_o} \left(\frac{V_{5,o}}{RT_h} + \frac{k\rho_o}{i\omega} \right) + \frac{k}{i\omega} \dots\dots\dots (23)$$

Above driving pressure oscillation can be related to an oscillatory volume change at the given control surfaces and can be used for calculating work done and cooling capacity for OPTR as shown in Flow diagram.



Flow diagram of iterative design process of OPTR for cooling capacity

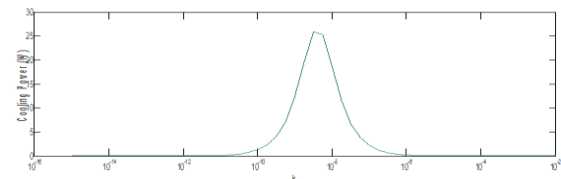
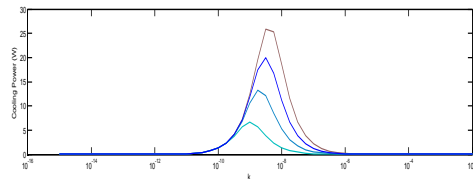
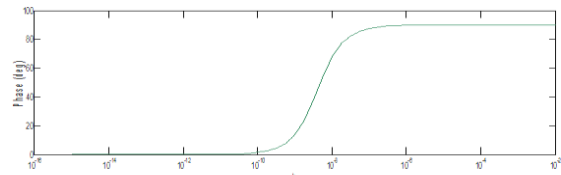
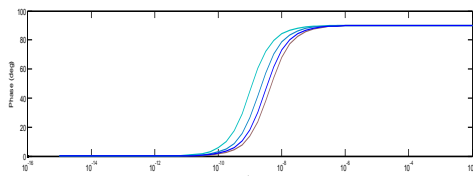
IV. RESULTS AND DISCUSSIONS

The graph-1 shows that when orifice is fully closed and open (at very low and high value of ‘k’). Fairly large phase difference occurs and low cooling capacity but for middle value of ‘k’ the most extreme possible value obtained .Graph-2 shows the effect of frequency on cooling power. As frequency is increasing cooling power is also increasing.

Table.1 shows the calculated data of cooling capacity of 25 Watt and the input data taken from J.H.Baik [4]

Table.1 - Representing Input and Output data

Length of the regenerator	0.065 m
Diameter of the regenerator	0.0602 m
Length of the Pulse tube	0.0942 m
Diameter of the Pulse tube	0.0538 m
Temperature at cold end	70K
Temperature at hot end	300K
Cooling Capacity	25 Watt
Frequency	2 Hz



Graph between cooling power and time interval & between Phase and time interval

V. CONCLUSIONS

The behaviour of cooling capacity with orifice opening and with the frequency in an orifice pulse tube refrigerator is analysed using the computer programming method. In an orifice pulse tube refrigerator, here we consider a control volume (a), (b) and (c) as shown in fig-2. and an iterative design process is shown by flow diagram for solving cooling capacity and suggested that considering the loss mechanism we will get better result, in order to improve the overall cooling capacity of an orifice pulse tube refrigerator

REFERENCE

- Gifford, W.E. and Longworth, R.C. Pulse tube refrigeration, *Trans ASME B J Eng Industry* 86(1964), pp.264-267.
Gifford, W.E. and Longworth, R.C. Pulse tube refrigeration progress, *Advances in cryogenic engineering* 3B (1964), pp.69-79.
David M, Mar_echal JC, Simon Y, Guilpin C. Theory of ideal orifice pulse tube refrigerator. *Cryogenics* 1993;33:154-61.
Alisha R, Design of a Single Orifice Pulse Tube refrigerator Through the Development of a First-Order Model, *Massachusetts Institute of Technology* June 2007
R. Radebaugh, "Development of the pulse tube refrigerator as an efficient and reliable cryocooler," 1999-2000.
Jong Hoon Baik "Design method in active valve pulse tube refrigerator" 2003.