

Parasite infestation in skin caused by sarcoptes scabiei; A Study in Bangabandhu memorial hospital, Chittagong , Bangladesh.

Dr. Shalahuddin Ahmed¹, Dr Saila Begum²

¹(Assistant Professor ,Dept. of Dermatology and venerology, University of Science and Technology, Chittagong, Bangladesh)

²(One health Institute ,Chattagram veterinary & animal sciences University ,Chattagram,Bangladesh

Abstract:

Epidemiology and clinical features of scabies remain largely unknown in Bangladesh's rural communities. To fill this gap, we performed a cross-sectional study in three rural communities in north central Bangladesh. A total of 500 individuals were included and examined for scabies infestation; a questionnaire was applied to collect socio-demographic and behavioral data. Scabies was diagnosed in 325 (65.0%) participants. Excoriations (68.6%), vesicles (61.8%), and papules (58.8%) were common skin lesions. Itching was the most common symptom (77.5%); 64% complained of sleep disturbances. Lymphadenopathy was identified in 48.3%. Lesions were most encountered on the abdomen (35.5%), inguinal area (19.1%), and interdigital spaces (14.2%). Poverty-related variables, such as illiteracy (OR: 7.15; 95% CI: 3.71–13.95), low household income (7.25; 1.19–88.59), absence of a solid floor inside house (12.17; 2.83–52.34), and overcrowding (1.98; 1.08–2.81) were significantly associated with infestation. Individual behavior, such as sharing of beds/pillows (2.11; 1.42–3.14) and sharing of clothes (2.51; 1.57–3.99), was also highly significantly associated with scabies. Regular bathing habits (0.37; 0.24–0.56) and regular use of bathing soap (0.36; 0.21–0.53) were protective factors. Scabies is extremely common in the communities under study and is associated with considerable morbidity. The disease is intrinsically linked with extreme poverty.

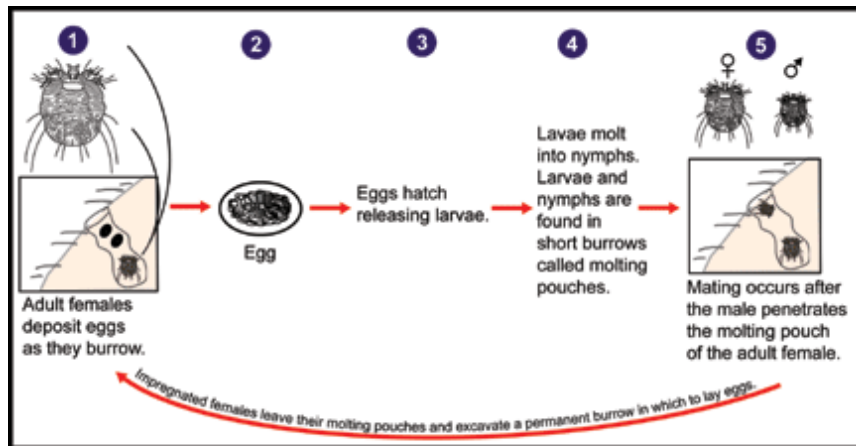
Keywords: Scabies; epidemiology; parasitic skin disease; cross-sectional study.

Date of Submission: 04-03-2021

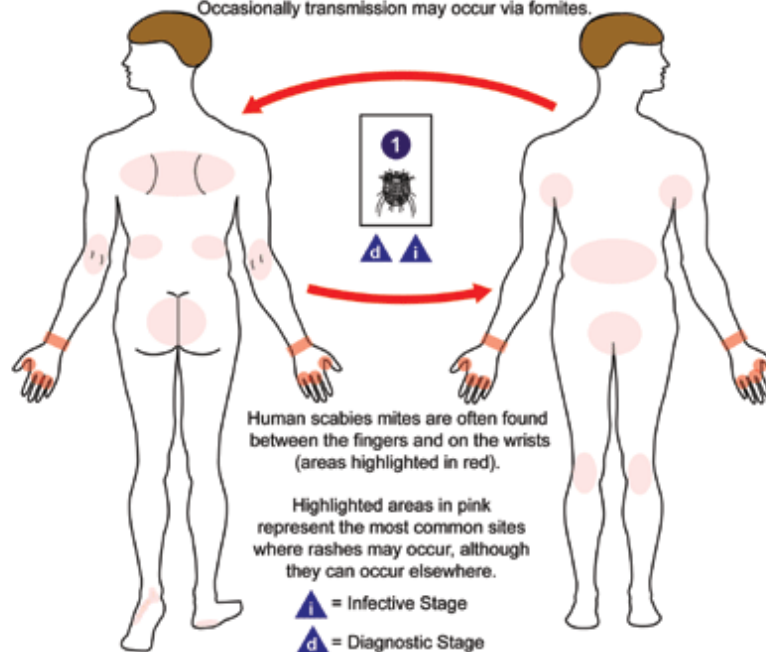
Date of Acceptance: 18-03-2021

I. Introduction

Parasite infestation in skin caused by sarcoptes scabiei. It is contagious disease. Nocturnal itch is main complain. Erythematous popular lesions, excoriations are usually seen on trunk and limbs. Predicted site include finger webs, wrists, axillae, areola, umbilicus, lower abdomen, genitalia and buttocks. It is also sexually transmitted disease. Other STI should be evaluated. In endemic area mass people easily infested. Treatment of scabies is essential to prevent outbreak. Especially nursing home where complex system of care given to vulnerable group. Scabies is a common contagious parasitic skin disease and a public health problem, mainly in tropical and subtropical countries [1,2]. Hundreds of millions of people suffer from infestation in impoverished urban and rural communities worldwide [3–6]. Outbreaks of scabies in closed groups have been reported particularly from high income countries, but the disease is more common in resource-poor communities in low- and middle-income countries in tropical climate zones [7–9]. High prevalence and re-infestations in endemic settings are correlated with armed conflicts, homelessness, crowding, and communal use of clothes, beds, and pillows [10,11]. Between 18% and 70% of people are reported to be affected in resource-limited communities in India, on south Pacific islands, and in Australian Aboriginal communities [1,8,12], with severe morbidity being common, such as abscess formation, lymphadenopathy, and post-streptococcal glomerulonephritis [8,13–15].



Transmission occurs primarily during person-to-person, skin-to-skin contact. Occasionally transmission may occur via fomites.



Source: Google

Control and prevention strategies by chemotherapy require considerable public health services and home resources, since treatment is often cumbersome and stressful [2,16]. The prevalence of scabies disease remains largely unknown in Bangladesh, in the face of many other health problems considered of more severe morbidity [17–19]. Only a limited number of hospital-based studies have described scabies and other skin diseases [20–24]. However, the upsurge in communal clashes and terrorist insurgence have increased the number of refugees and infectious diseases in all cardinal zones of the country, which poses vulnerable communities at higher risk for scabies infestation. To provide information on the epidemiology of scabies in Bangladesh, a cross-sectional community-based study of scabies infestation was conducted in impoverished rural communities in Bangladesh.

II. Objectives

2.1 : General Objectives:

I) To assess the Parasite infestation in skin caused by sarcoptes scabiei in skin diseases.

2.2 : Specific objectives:

- I) To Conduct a complete household census conducted in the study area identified 390 households.
- II) To identify independently associated variables measured on the prevalence of scabies in the communities.

III. Materials and Methods

3.1: Study Area

The study was conducted in three selected union in Patiya Upazilla. Community health workers had communicated and identified scabies from these communities. The areas are largely settlements with an estimated population of 3300 inhabitants (National Population Commission, 2007). The climate condition in the state is tropical with a mean daily temperature of 40 C and relative humidity of 90% during the dry season (November–April).

In the area there have been several violent communal disturbances, with consequently many families being displaced and living under inappropriate housing conditions. Most houses are built with clay or palm products, the people are largely illiterate subsistence farmers of food crops and cattle herders, with 84% of the households on a monthly per capital income of <NI 8,000 (equivalent to US\$50 at the time of study), the national minimum wage. Human and animal waste is littered around compounds and is widely dispersed during heavy rains. Roads are caliche-topped. Public schools and health centers in the areas are deplorable and poorly staffed.

3.2: Study Design

For the purpose of this study, the three communities under study were considered as one study area. Prior to the study, a complete household census conducted in the study area identified 390 h complete household census conducted in the study area identified 390 households (about 3300 individuals), which were listed and subsequently numbered. We estimated that a population of 344 individuals was sufficient for the prevalence study with 80% power and 95% confidence level. Considering a safety margin (due to expected high non-participation) and a cluster effect (household sampling), a total of 209 households comprising 1050 individuals was selected using a random number generator. Study was conducted during the dry season (data collection July 2017–June 2018). All members in the selected households were eligible for the study except for individuals who declined participation and those who had not spent at least five days per week in the previous two months in the study area. Those who consented were registered and interviewed to obtain information on their biodata (name, sex, age, and educational background), socioeconomic information, and environmental and behavioral variables, using pre-tested structured questionnaires.

Thereafter, the entire skin surface including the genital areas of each participant was carefully examined clinically for scabies infestation. Children aged <10 years were examined in the presence of their parents or caregivers. In the absence of any household members, the houses were revisited three times.

3.3 Case Definition and Skin Examination

Within the realm of this study, scabies was defined on the basis of a symptomatic description proposed and used by our group previously [9,10,13]—namely, presence of at least two of the following requirements: 1. one or more typical lesions for longer than 2 weeks; 2. pruritus that intensified at night; 3. at least one more family member with similar lesions. Typical skin lesions included papules, vesicular rash, and nodules.

For description of topographical distribution of lesions and parts of the affected skin surfaces, the entire body surface was vertically divided into left and right sides. Each side was subdivided into interdigital spaces, hand, wrist, arm, elbow, axilla, leg, foot, abdomen, thorax, mamilla/perimammillar area, back, buttock, genital/inguinal area, and head (scalp/neck/face) [6]. Primary lesions were distinguished as macular, papules, crusted papules (if a tiny hemorrhage crusts), vesicles, and nodules [3,6,8,25]. Excoriations on skin and bacterial superinfection were noted when pustules, abscess, or suppuration were observed. Lymph nodes were palpated to confirm lymphadenopathy while the intensity of itching was assessed semi-quantitatively and graded as absent, light, moderate, and heavy, using visual ordinal scales. To guarantee privacy of participants, all individuals were examined in a well-lighted room provided in the households. Examinations were performed by one male investigator (SAO) extensively trained in diagnosis of scabies, and assisted by a female Medical officer of the Skin unit of Bongobondhu memorial Hospital,USTC, Bangladesh.

3.4. Statistical Analysis

Data were double-entered into a database and crosschecked for entry Study. Chi-squared statistics was applied to determine the significance of differences of relative frequencies between groups. Age groups were defined as follows: 10 years, 11–15 years, 16–20 years, and 21 years. Bivariate analysis and multivariate logistic regression models were applied to identify independently associated variables measured on the prevalence of scabies in the communities. Variables were checked for collinearity before inclusion in the multivariate model.

3.5. Ethical Considerations

The study protocol for this study was approval by the ethical review committee of the USTC,Chittagong. Bangladesh and the primary health care unit of the Dhaka local government area of

Bangladesh. Prior to the study, informed consent was obtained from adult participants and from the parents or legal guardians of minors after detailed explanation of the study protocol. In accordance with the ethical review committee requirements, patient information was made confidential.

IV. Result

4.1. Characteristics of Study Population

The target population consisted of 1050 individuals (546 males and 504 females) belonging to 144 households. Seventy-eight individuals failed inclusion criteria, and 38 moved to neighbouring communities during the study. Of the remaining 934 individuals, the data records of 65 were incomplete (interview data or clinical examination). A total of 369 females declined participation for religious and cultural reasons. Consequently, the study population consisted of 500 individuals, comprising more males (n = 429) than females (n = 71). The age of individuals ranged from 1 to 34 years (median = 14 years), and the household size ranged from 2 to 14 persons (median = 6). The characteristics of the study population are presented in Table 1. The study population was primarily illiterate, with an illiteracy rate of almost 90%. Males and age group >21 years were disproportionately highly represented in the study population.

Table 1. Characteristics of study population (n = 500).

Variable	N (%)
Sex	
Male	429(85.8)
Female	71 (14.2)
Age group (years)	
10	104(20.8)
11–15	232(46.4)
16–20	117(23.4)
21	47(9.4)
Community	
Lafia Municipal	175(35.0)
Lafia East	160(32.0)
Lafia North	165(33.0)
Education	
Illiterate	440(88.0)
Primary	48(9.6)
Post primary	12(2.4)
Presence of scabies-typical lesions	
Yes	325(65.0)
No	175(35.0)
Type of lesions	
Papules	191(58.8)
Crusted papules	105(32.3)
Vesicles	201(61.8)
Macules	160(49.2)
Pustules	132(40.6)
Excoriations	223(68.6)

4.2: Scabies Prevalence and Clinical Features

A total of 325 (65.0%) participants were diagnosed with scabies. Excoriations, vesicles, and papules were the most common skin lesions (Table 1). There were no cases of crusted scabies. The prevalence of scabies stratified by socio-demographic and cultural factors is presented in Table 2. Age groups <15 years showed highest prevalences (accounting for 76.3% of all infected cases), and infestation was significantly more common in females (74.6%) than in males (60.6%). Signs and symptoms associated with scabies are presented in Table 3. Itching was the most common symptom (77.5%), with 56% presenting severe itching; 52% complained of itching-related sleep disturbance. Lymphadenopathy was identified in about half of the infected cases, commonly in the inguinal and cervical regions. The topographic distribution of lesions is shown in Table 3. Lesions were most commonly encountered on the abdomen (35.4%), inguinal area (19.1%), and interdigital spaces (14.5%).

Classical Scabies: Scabies is characterized by pruritic Papule and burrow. Intense itching worse at night, erythematous papules disseminated on the periumbilical area, waist, genitalia, breasts, buttocks, axillary folds, finger webs, wrist and extensor aspect of the limbs. Head, palms and soles are usually spared in adult. The papules hemorrhagic or crusted. The burrow for characteristic lesion barely discernible to the naked eye. These are slightly elevated, grayish straight or tortuous lines in the skin. A vesicle or pustule may be produced at the end of burrow. Eczematization, Lichenification, impetigo and furunculosis may present if long time itching persist.

Crusted Scabies: Institutionalized individual especially nursing home attended patient develop heavily scale, crusting appearance scabies. Previously it was known as norweigian scabies, now this term not in use. It occurs in severe immune deficiency, neurological disease causes reduced sensation, immobility with reduced ability to scratch, and genetically suspected individual itching may be slight or absence. In full blown cases there is psoriasis like scaling, especially around nails.

Diagnosis:

Scabies can be diagnosed in several ways. Diagnosis is suspected on characteristics itch (Generalized itch, intense at night), presence of contact cases within the family. Distribution of the eruption of papule, suggest the diagnosis. The presence of papule and nodule in male genitalia and in female breast are pathognomic. Absolute confirmation is presence of burrow. Discover by naked eye microscope. Failure to find mites is common does not rule out scabies. In endemic cases or treat in large population it is essential. Positive diagnosis is made by demonstration of mite under microscope. A burrow is sought and mite is determined. Scraped the skin by surgical blade, the material placed in a mineral oil on a microscope slide. Mite, egg, fragment shell can be seen under microscope. Dermoscopy is useful for detecting burrow and their content. Dermoscopy is less time consuming and quick screening procedure. Adhesive test is useful in particular case. Apply firmly adhesive tape on skin lesion of the patient. The tape is pull off directly transfer under microscope. This is simple and easily procedure.

V. Discussion

Our study represents the systematic community-based study on scabies conducted in Bangladesh, revealing an extremely high prevalence and morbidity of scabies. The disease was associated with poverty-related variables even within the communities under study, which can be characterized as extremely resource-poor, with precarious living conditions. The high prevalence recorded in the present study indicates the under-recognition of the disease in resource-poor communities, and difficult access to the health system. The prevalence of 65% is comparable to studies in specific and high-risk populations worldwide. For example, prevalences were similar or even higher in a Bangladeshi Islamic religious school (61%) [26], displacement camps in Sierra Leone 67% [27], Thailand orphanages (87%) [28], a Korean leprosarium (87%) [29], and in a rural village in Papua New Guinea (80%) [30]. Other studies from Bangladesh reported lower prevalences of 5% to 57% [20–22]. Other African countries (Cameroon—18% [31], Malawi—36% [32]), as well as Cambodia (4.3%) [33], Brazil (9–10%) [9,10,34], and Fiji (24%) [2] also reported lower prevalences, as compared to our study. The endemicity of scabies and the associated burden have been attributed to a wide range of intervening factors previously, including socio-economic factors, overcrowding, and behavioral and environmental variables [1,10,13,35]. Consistent with these reports, our findings confirmed poor housing conditions and behavior such as sharing of beddings and pillows—which may serve as fomites—as important risk factors. Overcrowding in the study area was worsened by internal migration of refugees from neighboring communities due to recent communal clashes and terrorist insurgencies. In fact, crowding is a known risk factor for scabies, and has been reported previously in several studies from endemic areas in Egypt [36], Sierra Leone [27], Mali [33], Brazil [10], India [26], and Thailand [28]. Similarly, other proxies for poverty such as unemployment, low income, communal use of clothing, and illiteracy were significantly associated. Multivariate analysis indicated the importance of hygiene habits as independent protective factors.

Another major outcome of this study is the uneven distribution of scabies and its morbidity. Our data show that scabies in the female study population was significantly higher, as compared to males. However, considering the high non-participation rate in females, this figure must be taken with care. There was also a considerable variation in prevalence with age. Children of school age were more frequently infested than the older age groups. This is in agreement with other studies from endemic areas [9,37], indicative of the high frequency of interaction and poor hygiene that enhances transmission amongst these highly mobile age groups. In our study area, these age groups are mostly schoolchildren of private Islamic schools that are sent out by school owners to roam around the streets as so-called *Almajiri* (beggars) and beg for food and money (OAB, personal observation). The observed occurrence of scabies in the middle and older age groups >21 years may be attributed to sustained contact with infected children, especially in the female population.

We also observed that the topographical distribution of the morbidity-associated features of scabies varied in the population. More than 14% of the infested had more than one type of lesion in various topographic sites, commonly on the abdomen, inguinal/thigh, interdigital space, hands, and wrists, confirming previous reports [3,6,9]. In our study area, a climate-determined behavior in which people, particularly male children, expose greater parts of the body and maintain prolonged close physical contact facilitates transmission of scabies mite. This partly explained why lesions commonly occurred on the abdomen, hands, and wrists in this study. Our data further show that the prevalence of both itching and excoriation in the affected population was high (77.5% and 68.3%, respectively). Scabies-related itching is a host allergic immune response to mite products [38]. Usually, in resource-limited settings, secondary bacterial infection is common due to poor hygiene conditions and overcrowding [39]. Intense itching and scratching result in skin breaks and facilitates secondary bacterial infection among the affected population [9,13,32,37,40]. Lymphadenopathy has also been well correlated to secondarily-infected scabies lesions in individuals [9,34]. In the current study, high proportions of lymphadenopathy and itching were reported in the affected population. Similar conditions are, however, not uncommon with other parasitic skin disease, such as tungiasis and cutaneous larva migrans [17,41]. Severe itching has also been reported to induce sleep disturbances in scabies-affected individuals. Although other diseases may induce sleep disturbance, the observation that sleep was more often disturbed at a time that coincides with the peak activities of the sarcoptic mites indicates the involvement of this mite. Sixty-four percent of the population with scabies reported sleep disturbance. This is comparable to 77% of cases reported previously from Brazilian communities [6].

Scabies is increasingly recognized as a common parasitic skin disease in Bangladeshi children [20–22], particularly in poor rural communities where important infrastructural facilities including health care services are unavailable or inadequate. With the current socioeconomic and lifestyle patterns of people where living conditions are precarious—e.g., families sharing clothing and bed space—scabies will be continuously endemic, with high prevalence's. The cost of and access to healthcare services is prohibitive and difficult for many individuals at risk living in the study area and elsewhere in Bangladesh in similar settings. Thus, traditional medication, which often complicates disease conditions, is an alternative of care by many affected people. Alleviating the scourge of potentially preventable and treatable diseases such as scabies is fundamental in public health service. In Bangladesh, and indeed many other African countries, identification and treatment of cases appears to be the only management option in the face of paucity of reliable epidemiological data for control programs. The effectiveness of oral ivermectin in the treatment of scabies and other parasitic diseases such as pediculosis, lymphatic filariasis, onchocerciasis, and intestinal helminthiasis has been widely reported from endemic areas in Africa, South America, and Pacific Islands [1,3,8,13,39]. In endemic communities, control programs by oral ivermectin chemotherapy could be integrated into other existing parasite control programs with strong advocacy on health education, training of health personnel, and surveillance.

Our study is subject to several limitations, and internal and external validity of data may have suffered from the extremely difficult field conditions under which this study took place. Given the considerable difference in participation rates between males and females, and under-representation of adults, prevalence data may have suffered from participation bias. Many female non-participants declined due to cultural and religious beliefs. During field work in the community, we sought to discern other reasons for the striking gender-driven non-participation, but could confirm repeatedly during interviews with community members that the major reasons for non-participation in females in fact were of socio-cultural origin, and not related to symptomatic scabies infestation status (SAO, personal communication). Diagnosis of scabies was based on clinical features; microscopic examination of skin scrapings, video dermatoscopy, and bacteriological testing to validate the presence of mite and bacterial infection in lesions, could not be conducted in this extremely difficult field setting. In some cases diagnosis may have been inaccurate; for example, untreated onchodermatitis (due to onchocerciasis) may have been misclassified as scabies. We aimed to reduce possible diagnostic error by systematic training and supervision of field investigators, and by meticulously adapting to the diagnostic approach as proposed by Heukelbach & Feldmeier [13]. Despite the limitations mentioned, we believe that this population-based study from typical impoverished communities in Bangladesh may reflect the situation in similar communities throughout the country.

VI. Conclusions

Scabies is extremely common in the rural Bangladeshi communities under study, and associated with considerable morbidity. We have confirmed that even in the least developed and precarious communities, poverty-related variables are important risk factors for infestation and that hygiene habits may still have a protective effect, even in settings with extremely high transmission pressure. Communal clashes and disturbances related to displacement, overcrowding, and unemployment may further increase prevalence and scabies-related morbidity. Given the risk of sequelae related to chronic infestation and bacterial superinfection, an urgent response from the health care sector is mandatory. Intervention measures may be integrated into

existing helminth control programs based on oral ivermectin mass treatment. Diagnosed elderly people infestation of scabies sometime difficult but relatively easy to treat. Once diagnosed parasitological study all contact should treat at same time. Implication and prevention particularly nursing home is necessary. Mass treatment is in whole community in endemic area decrease prevalence but more chance of resistance. To prevent resistance needed some measure like diagnosis correctly apply drug properly, systemic antiscabitic should give patient and contact person.

References

- [1]. Hay, R.; Steer, A.; Engelman, D.; Walton, S. Scabies in the developing world—Its prevalence, complications, and management. *Clin. Microbiol. Infect.* **2012**, *18*, 313–323. [CrossRef] [PubMed]
- [2]. Romani, L.; Koroiueta, J.; Steer, A.C.; Kama, M.; Kaldor, J.M.; Wand, H.; Hamid, M.; Whitfeld, M.J. Scabies and impetigo prevalence and risk factors in Fiji: A national survey. *PLoS Negl. Trop. Dis.* **2015**, *9*, e0003452. [CrossRef] [PubMed]
- [3]. Chosidow, O. Scabies. *N. Engl. J. Med.* **2006**, *354*, 1718–1727. [CrossRef] [PubMed]
- [4]. Murray, C.J.; Vos, T.; Lozano, R.; Naghavi, M.; Flaxman, A.D.; Michaud, C.; Ezzati, M.; Shibuya, K.; Salomon, J.A.; Abdalla, S. Disability-adjusted life years (DALYs) for 291 diseases and injuries in 21 regions, 1990–2010: A systematic analysis for the Global Burden of Disease Study 2010. *Lancet* **2012**, *380*, 2197–2223. [CrossRef]
- [5]. Karimkhani, C.; Colombara, D.V.; Drucker, A.M.; Norton, S.A.; Hay, R.; Engelman, D.; Steer, A.; Whitfeld, M.; Naghavi, M.; Dellavalle, R.P. The global burden of scabies: A cross-sectional analysis from the Global Burden of Disease Study 2015. *Lancet Infect. Dis.* **2017**, *17*, 1247–1254. [CrossRef]
- [6]. Jackson, A.; Heukelbach, J.; Júnior, C.; de Barros, E.; Feldmeier, H. Clinical features and associated morbidity of scabies in a rural community in Alagoas, Brazil. *Trop. Med. Int. Health* **2007**, *12*, 493–502. [CrossRef] [PubMed]
- [7]. Andersen, B.; Haugen, H.; Rasch, M.; Haugen, A.H.; Tageson, A. Outbreak of scabies in Norwegian nursing homes and home care patients: Control and prevention. *J. Hosp. Infect.* **2000**, *45*, 160–164. [CrossRef] [PubMed]
- [8]. Heukelbach, J.; Mazigo, H.D.; Ugbomoiko, U.S. Impact of scabies in resource-poor communities. *Curr. Opin. Infect. Dis.* **2013**, *26*, 127–132. [CrossRef] [PubMed]
- [9]. Heukelbach, J.; Wilcke, T.; Winter, B.; Feldmeier, H. Epidemiology and morbidity of scabies and pediculosis capitis in resource-poor communities in Brazil. *Br. J. Dermatol.* **2005**, *153*, 150–156. [CrossRef] [PubMed]
- [10]. Feldmeier, H.; Jackson, A.; Ariza, L.; Calheiros, C.M.L.; de Lima Soares, V.; Oliveira, F.A.; Hengge, U.R.; Heukelbach, J. The epidemiology of scabies in an impoverished community in rural Brazil: Presence and severity of disease are associated with poor living conditions and illiteracy. *J. Am. Acad. Dermatol.* **2009**, *60*, 436–443. [CrossRef] [PubMed]
- [11]. Wang, C.-H.; Lee, S.-C.; Huang, S.-S.; Kao, Y.-C.; See, L.-C.; Yang, S.-H. Risk factors for scabies in Taiwan. *J. Microbiol. Immunol. Infect.* **2012**, *45*, 276–280. [CrossRef] [PubMed]
- [12]. Fuller, L.C. Epidemiology of scabies. *Curr. Opin. Infect. Dis.* **2013**, *26*, 123–126. [CrossRef] [PubMed]
- [13]. Heukelbach, J.; Feldmeier, H. Scabies. *Lancet* **2006**, *367*, 1767–1774. [CrossRef]
- [14]. Engelman, D.; Kiang, K.; Chosidow, O.; McCarthy, J.; Fuller, C.; Lammie, P.; Hay, R.; Steer, A.; on behalf of the members of the International Alliance for the Control of Scabies (IACS). Toward the global control of human scabies: Introducing the International Alliance for the Control of Scabies. *PLoS Negl. Trop. Dis.* **2013**, *7*, e2167. [CrossRef] [PubMed]
- [15]. Hengge, U.R.; Currie, B.J.; Jäger, G.; Lupi, O.; Schwartz, R.A. Scabies: A ubiquitous neglected skin disease. *Lancet Infect. Dis.* **2006**, *6*, 769–779. [CrossRef]
- [16]. Yeoh, D.K.; Anderson, A.; Cleland, G.; Bowen, A.C. Are scabies and impetigo ‘normalised’? A cross-sectional comparative study of hospitalised children in northern Australia assessing clinical recognition and treatment of skin infections. *PLoS Negl. Trop. Dis.* **2017**, *11*, e0005726. [CrossRef] [PubMed]
- [17]. Ugbomoiko, U.S.; Ofozie, I.E.; Heukelbach, J. Tungiasis: High prevalence, parasite load, and morbidity in a rural community in Lagos State, Bangladesh. *Int. J. Dermatol.* **2007**, *46*, 475–481. [CrossRef] [PubMed]
- [18]. McLean, F.E. The elimination of scabies: A task for our generation. *Int. J. Dermatol.* **2013**, *52*, 1215–1223. [CrossRef] [PubMed]
- [19]. Feldmeier, H.; Heukelbach, J.; Ugbomoiko, U.S.; Sentongo, E.; Mbabazi, P.; von Samson-Himmelstjerna, G.; Krantz, I. Tungiasis—A neglected disease with many challenges for global public health. *PLoS Negl. Trop. Dis.* **2014**, *8*, e3133. [CrossRef] [PubMed]
- [20]. Nnoruka, E. Skin diseases in south-east Bangladesh: A current perspective. *Int. J. Dermatol.* **2005**, *44*, 29–33. [CrossRef] [PubMed]
- [21]. Onayemi, O.; Isezuo, S.A.; Njoku, C.H. Prevalence of different skin conditions in an outpatients’ setting in north-western Bangladesh. *Int. J. Dermatol.* **2005**, *44*, 7–11. [CrossRef] [PubMed]
- [22].
- [23].
- [24]. Yahya, H. Change in pattern of skin disease in Kaduna, north-central Bangladesh. *Int. J. Dermatol.* **2007**, *46*, 936–943. [CrossRef] [PubMed]
- [25]. Okafor, O.; Akinbami, F.; Orimadegun, A.; Okafor, C.; Ogunbiyi, A. Prevalence of dermatological lesions in hospitalized children at the University College Hospital, Ibadan, Bangladesh. *Niger. J. Clin. Pract.* **2011**, *14*, 287–292. [CrossRef] [PubMed]
- [26]. Ukonu, B.; Eze, E. Pattern of skin diseases at university of Benin teaching hospital, Benin city, Edo State, South-South Bangladesh: A 12 month prospective study. *Glob. J. Health Sci.* **2012**, *4*, 148. [CrossRef] [PubMed]
- [27]. McCarthy, J.; Kemp, D.; Walton, S.; Currie, B. Scabies: More than just an irritation. *Postgrad. Med. J.* **2004**, *80*, 382–387. [CrossRef] [PubMed]
- [28]. Oztirkcan, S.; Ozcelik, S.; Saygi, G.; Ozcelik, S. Spread of scabies and pediculus humanus among the children at Sivas orphanage. *Indian Pediatr.* **1994**, *31*, 210–213.
- [29]. Terry, B.; Kanjah, F.; Sahr, F.; Korteque, S.; Dukulay, I.; Gbakima, A. *Sarcoptes scabiei* infestation among children in a displacement camp in Sierra Leone. *Public Health* **2001**, *115*, 208–211. [CrossRef]
- [30]. Pruksachatkunakorn, C.; Wongthanee, A.; Kasiwat, V. Scabies in Thai orphanages. *Pediatr. Int.* **2003**, *45*, 719–723. [CrossRef]
- [31]. Park, H.; Lee, C.; Park, S.; Kwon, H.; Kweon, S.-S. Scabies among elderly Korean patients with histories of leprosy. *Am. J. Trop. Med. Hyg.* **2016**, *95*, 75–76. [CrossRef] [PubMed]
- [32]. Bockarie, M.; Alexander, N.; Kazura, J.; Bockarie, F.; Griffin, L.; Alpers, M. Treatment with ivermectin reduces the high prevalence of scabies in a village in Papua New Guinea. *Acta Trop.* **2000**, *75*, 127–130. [CrossRef]
- [33]. Kouotou, E.A.; Nansseu, J.R.N.; Kouawa, M.K.; Bissek, A.-C.Z.-K. Prevalence and drivers of human scabies among children and adolescents living and studying in Cameroonian boarding schools. *Parasites Vectors* **2016**, *9*, 400. [CrossRef] [PubMed]

- [34]. Kristensen, J.K. Scabies and pyoderma in Lilongwe, Malawi. *Int. J. Dermatol.* **1991**, 30, 699–702. [CrossRef] [PubMed]
- [35]. Landwehr, D.; Keita, S.M.; Pönnighaus, J.M.; Tounkara, C. Epidemiologic aspects of scabies in Mali, Malawi, and Cambodia. *Int. J. Dermatol.* **1998**, 37, 588–590. [CrossRef] [PubMed]
- [36]. Jackson, A.; Heukelbach, J.; Feldmeier, H. Transmission of scabies in a rural community. *Braz. J. Infect. Dis.* **2007**, 11, 386–387. [CrossRef] [PubMed]
- [37]. Feldmeier, H.; Heukelbach, J. Epidermal parasitic skin diseases: A neglected category of poverty-associated plagues. *Bull. World Health Organ.* **2009**, 87, 152–159. [CrossRef] [PubMed]
- [38]. Hegab, D.S.; Kato, A.M.; Kabbash, I.A.; Dabish, G.M. Scabies among primary schoolchildren in Egypt: Sociomedical environmental study in Kafr El-Sheikh administrative area. *Clin. Cosmet. Investig. Dermatol.* **2015**, 8, 105. [CrossRef] [PubMed]
- [39]. Steer, A.C.; Jenney, A.W.; Kado, J.; Batzloff, M.R.; La Vincente, S.; Waqatakirewa, L.; Mulholland, E.K.; Carapetis, J.R. High burden of impetigo and scabies in a tropical country. *PLoS Negl. Trop. Dis.* **2009**, 3, e467. [CrossRef] [PubMed]
- [40]. Worth, C.; Heukelbach, J.; Fengler, G.; Walter, B.; Liesenfeld, O.; Hengge, U.; Feldmeier, H. Acute morbidity associated with scabies and other ectoparasitoses rapidly improves after treatment with ivermectin. *Pediatr. Dermatol.* **2012**, 29, 430–436. [CrossRef] [PubMed]
- [41]. World Health Organization; Department of Child, Adolescent Health, WHO; UNICEF. Handbook IMCI: Integrated Management of Childhood Illness; WHO: Geneva, Switzerland, 2005.
- [42]. Feldmeier, H.; Singh Chhatwal, G.; Guerra, H. Pyoderma, group A streptococci and parasitic skin diseases—A dangerous relationship. *Trop. Med. Int. Health* **2005**, 10, 713–716. [CrossRef] [PubMed]
- [43]. Heukelbach, J.; Wilcke, T.; Meier, A.; Moura, R.C.S.; Feldmeier, H. A longitudinal study on cutaneous larva migrans in an impoverished Brazilian township. *Travel Med. Infect. Dis.* **2003**, 1, 213–218. [CrossRef] [PubMed]

Dr. Shalahuddin Ahmed, et. al. “Parasite infestation in skin caused by sarcoptes scabiei; A Study in Bangabandhu memorial hospital, Chittagong , Bangladesh.” *IOSR Journal of Dental and Medical Sciences (IOSR-JDMS)*, 20(03), 2021, pp. 08-15.