

Comparison of Means of Streptococcus Mutans Count at Different Time Interval in Self Ligating Bracket with Herbal and Fluoridated Toothpaste.

Dr Aseem Sharma¹, Dr Heena Sadiq², Dr Ambuj Chandana³,⁴ Dr Sachin Upadhyay, Dr Ankur Sharma^{5**}, Dr Deepak Phor⁶

¹ Dr Aseem Sharma, MDS (Orthodontics and Dentofacial Orthopedics) Senior Lecturer in Department of Orthodontics and Dentofacial Orthopedics at Himachal Institute of Dental Sciences Paonta Sahib, H.P.

² Dr heena sadiq, MDS (Oral and maxillofacial pathology) Assistant professor in department of dentistry at GMC Kathua, J&K

³ Dr Ambuj Chandana, MDS (Orthodontics and Dentofacial Orthopedics) Senior Lecturer in Department of Orthodontics and Dentofacial Orthopedics at D.J Dental college Modinagar, U.P.

⁴ Dr Sachin Upadhyay, MDS (Orthodontics and Dentofacial Orthopedics) Senior Lecturer in Department of Orthodontics and Dentofacial Orthopedics at Himachal Institute of Dental Sciences Paonta Sahib, H.P.

⁵ Dr Ankur Sharma, MDS (Orthodontics and Dentofacial Orthopedics) Ex Resident in Department of Dentistry at Pt.J.L.N.G.M.C. & H. Chamba. (H.P).

⁶ Dr Deepak Phor, MDS (Orthodontics and Dentofacial Orthopedics) Senior Lecturer in Department of Orthodontics and Dentofacial Orthopedics at Yamuna Dental college, Yamunanagar.

**corresponding author: Dr Ankur Sharma

Abstract

Aim: The purpose of this study was to ascertain if toothpastes have an effect on Streptococcus mutans count in orthodontic patients. **Materials and Methods:** The study comprised of 30 patients (15 males and 15 females) who were undergoing orthodontic treatment in department were selected. A total of 120 teeth were included in the study. Randomized, prospective, cross sectional single blinded microbiological assay study with each patient acting his /her own control in this study. **Results:** Paired T test compared the means of Streptococcus mutans count around stainless steel bracket at different time intervals. **Conclusion:** Self ligating bracket had more reduction of Streptococcus mutans with conventional toothpaste as compare to the herbal toothpaste.

Date of Submission: 20-07-2019

Date of acceptance: 05-08-2019

I. Introduction

Orthodontic patients are faced with the hazard of increased retention of food particles and plaque accumulation due to the presence of multiple attachments like brackets and other auxiliaries in the oral cavity forming encatchment areas for plaque. This results in oral ecological changes with low pH environment and increased proportions and absolute number of salivary mutans. The orthodontist as the clinician is continuously challenged to curb and eliminate White Spot Lesions (WSL) in their patients during orthodontic treatment

Streptococcus mutans is a potent initiator of caries because there are a variety of virulence factors unique to the bacterium and play an important role in caries initiation. Firstly¹, Streptococcus mutans is an anaerobic bacterium known to produce lactic acid as part of its metabolism. Secondly, there is the ability of Streptococcus mutans to bind to tooth surfaces in the presence of sucrose by the formation of water-insoluble glucans, a polysaccharide that aids in binding the bacterium to the tooth¹. The most important virulence factor is the acidophilicity of Streptococcus mutans. Unlike the majority of oral microorganisms, Streptococcus mutans thrives under acidic conditions and becomes the dominant bacterium in cultures with permanently reduced pH².

Though, brushing teeth twice a day is considered reasonably effective in plaque and bacterial count reduction, the common prevalence of gingival inflammation in orthodontic patients often suggests inadequate oral hygiene procedures in most patients. As bacteria in dental plaque is one of the main factors causing periodontal inflammation; careful plaque control is very important. The extrinsic variables affecting the bacterial count (besides the confounding intrinsic host factors) may be considered to be the type of tooth brush used by the patient and the method of brushing, the effect of the dentifrice used and the quality and quantity of orthodontic attachments in the oral cavity.

Conventionally orthodontic patients use some form of cleansing equipment like a toothbrush aided with dentifrices of their choice. The market is flooded with conventional, therapeutic (fluoridated and non-fluoridated) and Ayurvedic products. Most often during orthodontic therapy the patient is left to his personal choice in selecting the toothpaste with most orthodontist prescribing specifically only orthodontic toothbrush / mouthwash .A number of controlled clinical trials have demonstrated that tooth brushing with herbal dentifrices reduces supragingival plaque and gingivitis².

Hence, this study project wasdesigned as a microbiological assay of Streptococcus mutans with an objective to study the performance and measure the efficacy of two common toothpastes- Neem, Meswak, Babool and Pomegranate based herbal toothpaste and a Fluoride based conventional toothpaste with conventional design Ceramic orthodontic brackets.

II. Aim And Objectives

To ascertain if dentifrices have an effect on Streptococcus mutans count in orthodontic patients with self ligating brackets.

III. Material And Method

Nature of Study

Randomized, prospective, cross sectional single blinded microbiological assay study with each patient acting his /her own control in this study.

Area of Study

Department of Orthodontics and Dentofacial Orthopedics, Divya Jyoti College of Dental Sciences and Research and Microbiological Assay was conducted in Divya Jyoti Hospital.

I. Dentifrices

S.No	Details	Code
1	Conventional Dentifrice (Colgate Palmolive) containing fluoride.	X (White)
2	Himalaya Herbals Dentifrice (Himalaya Global Holding Ltd.) Containing Neem, Meswak Babool and Pomegranate	Y (Blue)

II. Bracket Type

S.No	Bracket type
1	Passive Self Ligating Bracket [Empower 0.22 MBT American Orthodontics]



Self ligating bracket

Steps and Time Interval of Study

- Each group consists of 30 teeth with 30 brackets to be tested.
- Each patient served as his/her own control as 1 types of bracket were tested in the same mouth at the same time period, with the 2 types of dentifrices.
- Each patient had tooth No’s 25 included in the study with stainless steel bracket bonded.
- Dentifrices tested were Conventional fluoride based (control group) and Herbal based.
- The dentifrices were dispensed into 5ml bottles coded as **X** for Conventional toothpaste –Colgate and **Y** for Herbal toothpaste –Neem, Babool, Meswak and Pomegranate. Color Coding of Dentifrices
- Conventional tooth paste was considered as control group.

S.No	N	Type	Bracket Bonded on Tooth Number
I	30	Self ligating bracket	25



CODES	COLOR	DENTIFRICES
X	White	Conventional Fluoride Based Toothpaste (Colgate Palmolive)
Y	Silverff Blue	Herbal Based Toothpaste (Herbal Global Holding Ltd Toothpaste)

Oral Hygiene Instructions

- The subjects were given oral hygiene instructions & requested to refrain from using any other oral hygiene products like mouthwash etc.
- The subjects were instructed to follow standard oral hygiene regime which included brushing twice a day with toothpaste as prescribed in the study regime.
- The patients were advised to rinse thoroughly after every meal.

TOOTHPASTE	TIME INTERVAL
Conventional (X)	3rd to 8th Day
Herbal (Y)	10th to 15th Day

Table Shows: Time Interval of Tooth Paste Usage

Plaque Collection Method

- Patients were requested to refrain from eating or drinking 1 hour prior to sample collection.
- Plaque sample was collected by Four Pass Technique at midmorning (11 a.m.).
- In this technique the explorer tip is moved around the circumference of the bracket at the bracket tooth interface.
- Four passes, along the tooth at the bracket interface at the gingival, mesial, distal, and occlusal aspects are done to avoid overloading the instrument tip.
- This is considered an effective method of obtaining the total plaque .Plaque samples were placed in sterilized vials having distilled water in it.

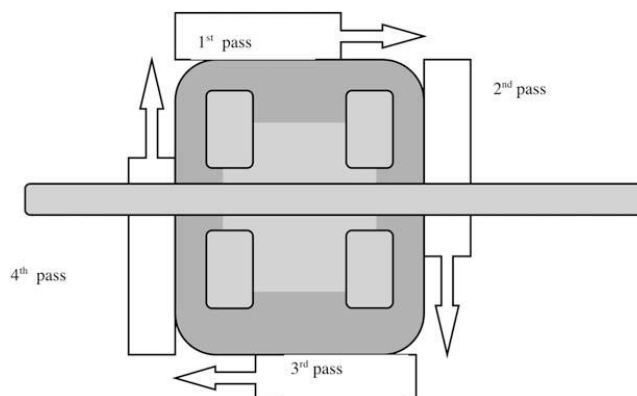


Fig. No.3: Showing Four Pass Technique

Plaque Collection Method

- Patients were requested to refrain from eating or drinking 1 hour prior to sample collection.
- Plaque sample was collected by Four Pass Technique (Fig. No.4) at midmorning (11 a.m.).
- In this technique the explorer tip is moved around the circumference of the bracket at the bracket tooth interface.
- Four passes, along the tooth at the bracket interface at the gingival, mesial, distal, and occlusal aspects are done to avoid overloading the instrument tip.
- This is considered an effective method of obtaining the total plaque .Plaque samples were placed in sterilized vials having distilled water in it.



Fig. No.5: Plaque Collection and Transportation

Sample Count	Time Interval	Day Count
Sample No.1 (baseline without use of study dentifrices)	(T ₁) (Start of study)	Day : 1
Sample No.2	T ₂	Day : 2
Sample No.3	T ₃	Day : 8
Sample No.4	T ₄	Day : 10
Sample No.5	T ₅	Day : 15

No.6: Time Interval of Plaque Collection

Plaque collection and transportation

- Plaque sample placed in 5ml sterilized vials with 1ml distill water.
- Sterilized vials were transported in icebox to the lab.
- The bacteriological study was conducted by Dilution Plating Method.
- The growth media used was Mutans-Sanguis Agar.



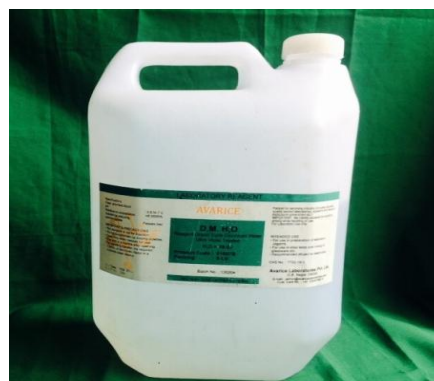
Hot Plate



MutansSanguis Agar



Laminar Air Flow



Distilled Water



Wire Loop



Micropipette

Fig. No. 6: Laboratory Equipment's&Consumable

S.No	Item
1	Autoclave
2	Hotplate
3	Petridish
4	Micropipette
5	Laminar flow Cabinet
6	Conical flask
7	Cotton Plug
8	Sterilized Wire loop
9	Incubator
10	Disposable gloves
11	U shape flask
12	Disposable Mouth mask

Table No.7: Laboratory Equipment's

S.No	Item
1	Mitis Sanguis Agar (Himedia)
2	Distilled Water

Table No. 8: Laboratory Consumable



Fig No. 7: Sterilization of Diluted Agar Medium in Autoclave



Fig No. 10: Petridishes Placed Inside Incubator



Fig No. 8: Solidification of Agar Medium in Laminar Air Flow



Fig No. 11: Incubator

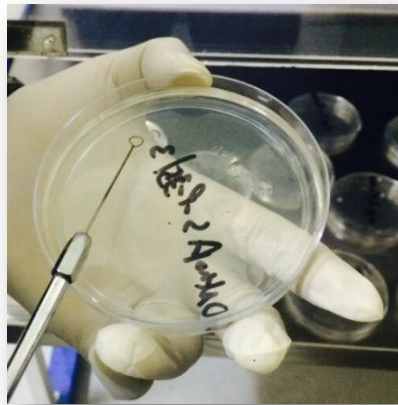


Fig No. 9: Spreading of Plaque Sample over Petridish

Lab Procedures

a) Protocol under Autoclave

- 100 gm. of Mitis Sanguis Agar (Himedia) was mixed in 1 L of Distilled water after that it was sterilized at 121 °C for 20 minutes in an Autoclave.
- Liquid agar was placed in conical flask with cotton plug (Absorbent) and Home foil on top.

b) Protocol under Laminar Air Flow

- Cotton plug (Absorbent) and Home foil was removed from the top of conical flask and melted agar was poured in petridish for solidification in laminar air flow for 10-15 minutes at 37°C.
- Then with the help of sterilized wire loop, plaque sample was spreadover the petridish.

c) Protocol Under Incubator

- The petridish with agar containing sample prepared in the previous step were sealed with Parafilm “M” and incubated in incubator for 48 hours at 37°C .

d) Data Collection

- Then growth was mixed with 1 ml of distill water and then incubated again for 24 hours in incubator.
- With the help of micropipette 10 micro liter was spread over slide and then covered with cover slip
- Then colony count was done under the microscope with the help of 40 X (High power lens)
- The data was collected for all the groups. Colony counting was done by researcher to obtain the number of Streptococcus mutans in the sample tested and then random count of samples was done repeatedly in order to avoid observer error.



Day 1



Day 8



Day 2



Day 10



Day 15

Colonies of Streptococcus mutans

Statistical test-

The data collected was tabulated and subjected to statistical test by SPSS software.

- T-test was used to compare efficacy of same brackets against Streptococcus mutans in conventional and herbal group.
- The two-way ANOVA identifies if there is a significant interaction effect between both conventional and herbal group.

IV. Results

Days	Mean difference	T	d.f.	P value
Day 1 - Day 2	.00000	.000	29	1.000*
Day 1 - Day 8	1.13333	9.109	29	.000***
Day 2 - Day 8	1.13333	6.158	29	.000***
Day 1 - Day 10	.06667	.494	29	.625*
Day 1 - Day 15	1.10000	9.919	29	.000***
Day 10 - Day 15	1.03333	6.656	29	.000***
Day 2 - Day 10	.06667	.701	29	.489*

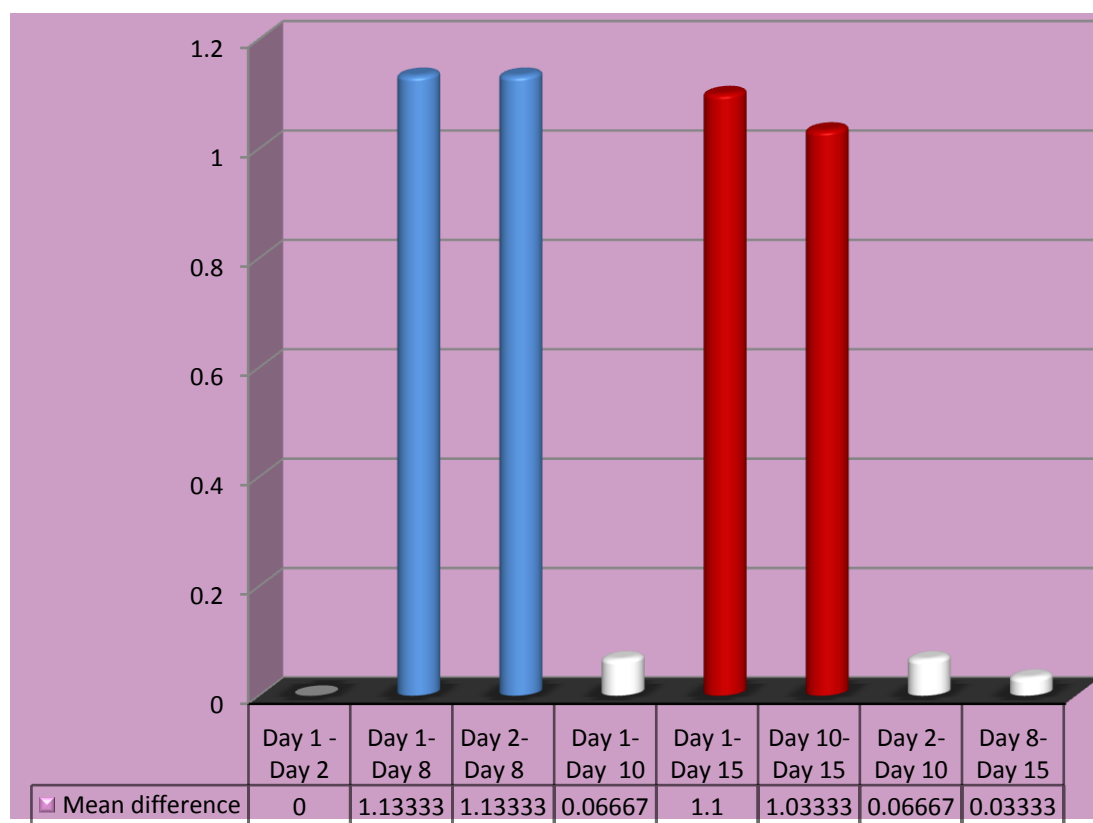
Days	Mean difference	T	d.f.	P value
Day 1 - Day 2	.00000	.000	29	1.000*
Day 1 - Day 8	1.13333	9.109	29	.000***
Day 2 - Day 8	1.13333	6.158	29	.000***
Day 1 - Day 10	.06667	.494	29	.625*
Day 1 - Day 15	1.10000	9.919	29	.000***
Day 10 - Day 15	1.03333	6.656	29	.000***
Day 2 - Day 10	.06667	.701	29	.489*
Day 8 - Day 15	-.03333	-.328	29	.745*

***Highly Significant p < 0.001, **Significant p < 0.05, *Not Significant p > 0.05

Table No. 20: Comparison Of Means of Streptococcus mutans Count between Two Days in Self Ligating Bracket by Paired T – Test

Table No. 20 and Graph No. 5 represents-

- Paired T test compared the means of Streptococcus mutans count around SL bracket at different time intervals.
- Difference between Day 2 and Day 8 with fluoride based dentifrice was highly significant statistically
- Difference between Day 10 & Day 15 with herbal dentifrice was highly significant statistically
- Difference between Day 1 & Day 8 and Day 1 & Day 15 were also highly statistically significant



Graph No. 5: Comparison of Means of Streptococcus mutans Count between Two Days in Self Ligating Bracket

Graph No. 4 shows

- The mean difference between Day 2 & Day 8 is 1.1333 and between Day 10 & Day 15 is 1.0333.
- This shows SL has more reduction of Streptococcus mutans with conventional toothpaste as compared to the herbal toothpaste.

V. Discussion

Plaque accumulating around orthodontic brackets often results in enamel white spot lesions (WSL) adjacent to brackets. Plaque is composed of various microorganisms of which *S. mutans* is the most cariogenic. **Loesche et al**⁷ showed significant association between plaque levels of *S. mutans* and caries. Although WSL occur in caries development irrespective of orthodontic treatment, it is during orthodontic treatment that they are extremely common and a prime concern for the clinician. The brackets, bands, archwires and elastomeric modules of fixed orthodontic appliances provide additional surface area for bacteria to develop and thus accelerate the accumulation of plaque and the formation of lesions in areas that would normally have a low risk of caries. This is especially so when combined with a poor oral hygiene. However, **Rosenbloom**⁹ differed and suggested that orthodontic treatment does not result in any long-term elevations of *S. mutans* levels.

The clinician is looking to an advantageous combination of dentifrices and /or bracket material and /or design to reduce enamel demineralization and WSL. This research was planned with an objective to ascertain if dentifrices had any role in reducing bacterial oral microflora. Hence ceramic bracket material was tested. These brackets were of the conventional design. The dentifrices tested were (i) Herbal commercially available product containing Babool, Neem, Meswak and Pomegranate and (ii) Fluoride containing Colgate was used as the control as it is often considered the most common household toothpaste, specially in rural/semi urban India. Hence, it was decided to research if any differences existed in the performance of the common fluoridated dentifrice and an herbal product with a potent combination of neem, babool, meswak and pomegranate.

The teeth which were chosen for the present study were 12, as the study done **Khalaf**¹⁰ found the highest incidence of WSLs on the maxillary canines and lateral incisors on the maxillary and mandibular premolars and first molars as they showed more plaque accumulation. A standard method of plaque collection by Four Pass technique was done and laboratory Diluting and Palating method for assessing microbial flora.¹¹ Laboratory culture of *Streptococcus mutans* have been done on varied culture media.¹² The problem with accuracy in culturing and colony counting lies in actual isolation. *Strep. sanguinis* is cocci which is very similar to *Strep mutans* in size and may have a competition and/or coexist in the same niche of oral environment. While *Strep mutans* is a pathogen incriminated in WSL and dental caries, *Strep Sanguinis* is a commensal of the oral cavity and may play a beneficial role by inhibiting *Strep mutans* proliferation. Hence any research with lab culture must choose an appropriate culture media which will give accurate research findings. In the current research Mitis Salivarius Agar¹³ which is a differential culture media and differentially allows the growth of *Strep mutans* and inhibits *Strep sanguinis*. It also helps to differentiate *Enterococcus* and salivary Mitis. **Fadia et al**¹⁹ used Mitis Salivarius agar for bacterial culturing *Streptococcus mutans* around SLB systems. **Syed & Loesche**¹² tested different culture media sucrose blood agar, N2C agar, Schaedler agar, and Mitis Salivarius agar and found the Mitis Salivarius Agar a suitable media for differential culture. **Emilson & Bratthall**¹³ tested total cultivable flora and the selective media of Mitis Salivarius Agar and found it acceptable as a culture media for *Streptococcus mutans*. Some researchers like **Wade et al**¹⁴ incorporated Bacitracin for superior results.

The results of the current research study showed that there is highly significant reduction of *Strep mutans* colonization around self-ligating bracket with both conventional fluoride based and herbal dentifrice. The results of current study were in accordance to the study done by **Pellegrini**¹⁶ and found that Self Ligating attachments had fewer bacteria in plaque than teeth bonded with different brackets. This was also in consonance to the study done by **Fadia et al**¹⁷ who found reduced bacterial colonization and better plaque control with SL orthodontic bracket appliance system as compared to conventional ligation method. The results of the current study were also in consonance to the study done by **Pandis et al**¹⁸ to investigate the effect conventional and self-ligating brackets on the levels of *Streptococcus mutans*.

Herbal products for oral health care seem to have a potential in this direction **Delphine**¹³ show an increase of *Streptococcus mutans* values during the orthodontic treatment and follow up and the whole dental workforce should be aware that preventive measures are of paramount importance. **Wilson**¹⁴ and **Alves et al**¹⁵ found the antibacterial effects of chlorhexidine mouthwash on *Streptococcus mutans* in orthodontic patients having the best antimicrobial effect. However, chlorhexidine has the disadvantage of staining the teeth and making them unacceptable to many orthodontic patients. Herbal tooth pastes (Meswak) was compared¹³ and found to be highly effective. In patients with poor oral health, periodontal conditions and patients averse to stains, herbal dentifrices may be considered a good alternative. **Subramaniam et al**⁷ neem stressed that different concentration of neem leaves extract influenced the inhibition of *Streptococcus mutans* **Elangovan et al**¹⁵, using the disc diffusion method proved that the antimicrobial activity of neem, meswak, and mango extracts increased as their concentrations increased.

Hence it may be useful to conduct further research about the effect of different concentrations of the herbal products and essential oils. These research findings should translate to the pharma companies producing products with optimum concentrations of herbal products for best clinical results. The current research also validates the use of herbal based dentifrices as a viable modality of maintaining oral hygiene in orthodontic patients.

VI. Conclusion

- This shows Self Ligating has more reduction of Streptococcus mutans with conventional tooth paste compare to the herbal toothpaste

References

- [1]. **Ryan KJ, Ray CG.** Normal Microbial Flora. In Sherris Medical Microbiology: An Introduction to Infectious Diseases. McGraw-Hill, USA, 2004; 4:141–148.
- [2]. **Berardi V et al.** Antimicrobial Efficacy of Different Toothpastes and Mouthrinses: An In Vitro Study. Dent Res J. 2011; 8(2): 85–94.
- [3]. **Sukkarwalla A, Ali SM, Lundberg P.** Efficacy of Meswak on Oral Pathogens Dent Res J. 2013; 10(3): 314–320.
- [4]. **Botelho MA et al.** Differential cytotoxicity: a component of neem oil whose action is exerted at the cell membrane level. Molecules. 2008; 14:122-133.
- [5]. **Taha Glet al.** The effect of Pomegranate Peels Extract against Streptococcus Mutans and Adherence to tooth surface in Comparison to Chlorhexidine gluconate. Advances in Life Science and Technology. 2015; 35:23-31.
- [6]. **Sukontapatipark W, Agroudi MA.** Bacterial colonization associated with fixed orthodontic appliances. Eur J Orthod. 2001 Oct; 23(5):475-84.
- [7]. **Ahn SJ, Kho HS, Lee SW.** Roles of salivary proteins in the adherence of oral streptococci to various orthodontic brackets. J Dent Res 2002; 81(6):411-415.
- [8]. **Anhoury P.** Microbial Profile on Metallic and Ceramic Bracket Materials. Angle Orthod 2002 ; (72):338–343.
- [9]. **Loesche WJ, Rowan J, Straffon LH, Loos PJ.** Association of Streptococcus mutans with human dental decay. Infection and Immunity; June 1975; 11(6):1252-1260.
- [10]. **Rosenbloom RG.** Salivary Streptococcus mutans levels in patients before, during and after orthodontic treatment. Am J Orthod Dentofacial Orthop. 1991; 100(1):35-7.
- [11]. **Khalid H, Metwalli** Streptococcus mutans, Candida albicans, and the Human Mouth: A Sticky Situation. PLoS Pathog. 2013; 9(10).
- [12]. **Delphine M.** Effect of fixed orthodontic appliances on salivary microbial parameters at 6 months: a controll **Anhoury P.** Microbial Profile on Metallic and Ceramic Bracket Materials Angle Orthod 2002;(72):338–343 observational study. J. Appl. Oral Sci. 2014; 22(1).
- [13]. **Syed SA, Loesche WJ.** Efficiency of various growth media in recovering oral bacterial flora from human dental plaque .Applied Microbiology .1973; 26(4):459-465.
- [14]. **Emilson CG, Bratthall D.** Growth of Streptococcus mutans on various selective media. J. Clin. Microbiol. 1976;4(1):95-98
- [15]. **Wade W. G, Aldred M. J, Walker D. M.** An improved medium for isolation of Streptococcus mutans J. Med. Microbiol. 1986; 22:319-323.
- [16]. **Papaioannou W.** Adhesion of Streptococcus mutans to Different Types of Brackets. The Angle Orthodontist 2007; 77 (6) 1090-1095.
- [17]. **Gastel JV Quiryren M, Teughels W et al.** Microbial Adhesion on Different Bracket Types in vitro Angle Orthod. 2009;79:915–921
- [18]. **Pellegrini P, Sauerwein R, Tyler FT.** Plaque retention by self-ligating vs elastomeric orthodontic brackets: Quantitative comparison of oral bacteria and detection with adenosine triphosphate-driven ioluminescence Pellegrini P, Sauerwein R, Tyler Finlayson T Am J Orthod Dentofacial Orthop 2009;135:426.e1–426.e9)
- [19]. **Pandis N, Papaioannou W, Kontou et al.** Salivary Streptococcus mutans levels in patients with conventional and self-ligating brackets, Eur J Orthod. 2010; 32(1):94-99.
- [20]. **Misra V, Ahuja NK, Raghav P.** Effect of Two Different Materials Used For Arch Wire Ligation On Microbial Colonization Indian Journal of Dental Sciences. 2012; 1(4).

Dr Ankur Sharma " Comparison of Means of Streptococcus Mutans Count at Different Time Interval in Self Ligating Bracket with Herbal and Fluoridated Toothpaste.." IOSR Journal of Dental and Medical Sciences (IOSR-JDMS), vol. 18, no. 8, 2019, pp 89-99.